

CHIPPEWA HILLS SCHOOL DISTRICT REMUS ELEMENTARY SCHOOL PHASE 2 REMODELING REMUS, MICHIGAN

S H E E T I N D E X

SITE:

- 100 EXISTING SITE SURVEY WITH DEMOLITION
- 101 SITE PLAN & DETAILS

ARCHITECTURAL:

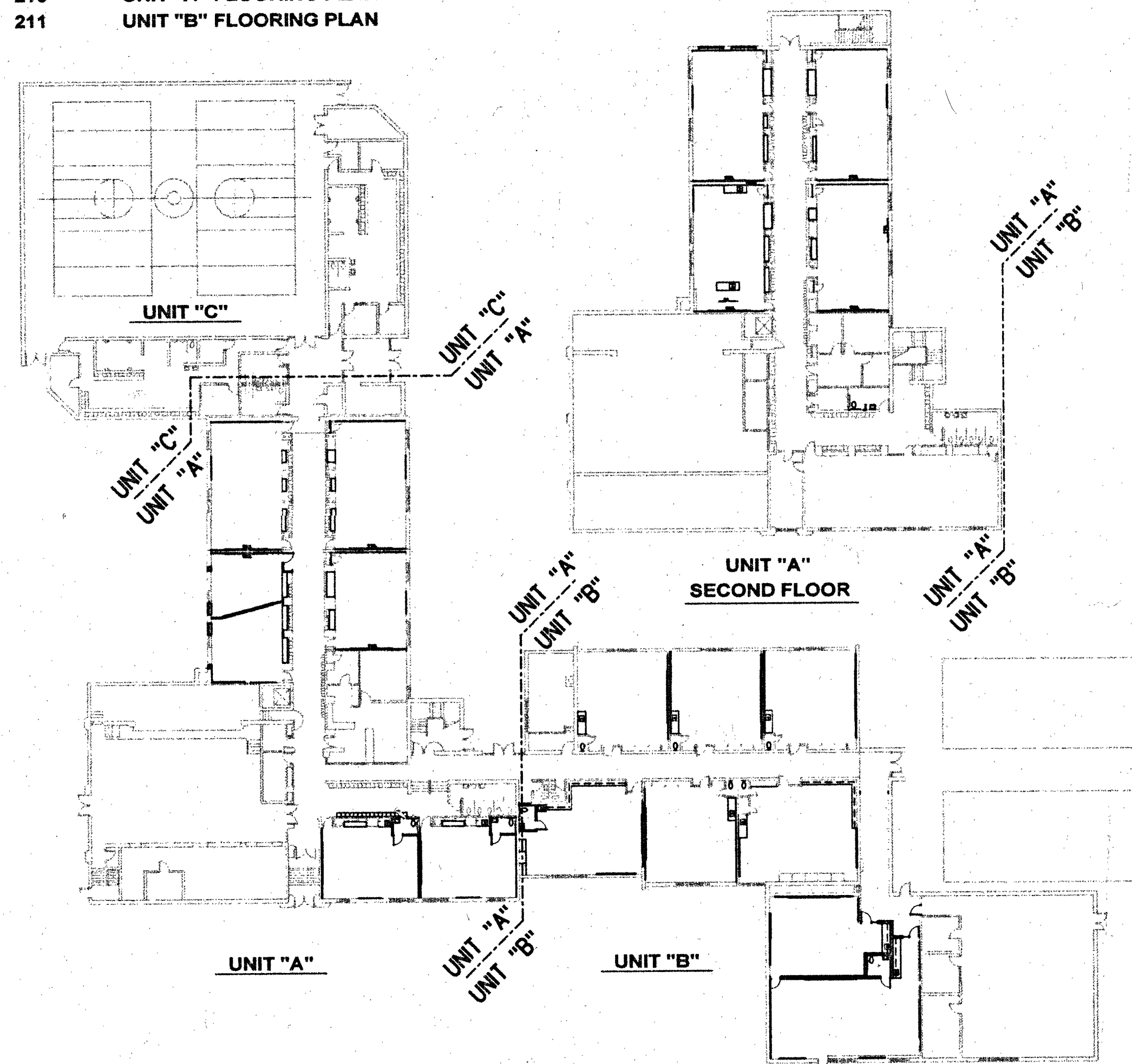
- 200 UNIT "A" FIRST AND SECOND FLOOR
CODE COMPLIANCE PLAN
- 201 UNIT "B" CODE COMPLIANCE PLAN
- 202 UNIT "A" FIRST AND SECOND FLOOR DEMOLITION PLANS
- 203 UNIT "B" DEMOLITION PLAN
- 204 UNIT "A" FIRST AND SECOND FLOOR PLANS
- 205 UNIT "B" FLOOR PLAN
- 206 UNIT "A" FIRST AND SECOND FLOOR
REFLECTED CEILING PLANS
- 207 UNIT "B" REFLECTED CEILING PLAN
- 208 DOOR AND FRAME SCHEDULE/DETAILS
- 209 INTERIOR ELEVATIONS
- 210 UNIT "A" FLOORING PLAN
- 211 UNIT "B" FLOORING PLAN

MECHANICAL:

- 401 MECHANICAL DEMOLITION PLAN
- 402 UNIT "A" PLUMBING FLOOR PLAN
- 403 UNIT "B" PLUMBING FLOOR PLAN
- 404 UNIT "A" MECHANICAL FLOOR PLAN
- 405 UNIT "B" MECHANICAL FLOOR PLAN

ELECTRICAL:

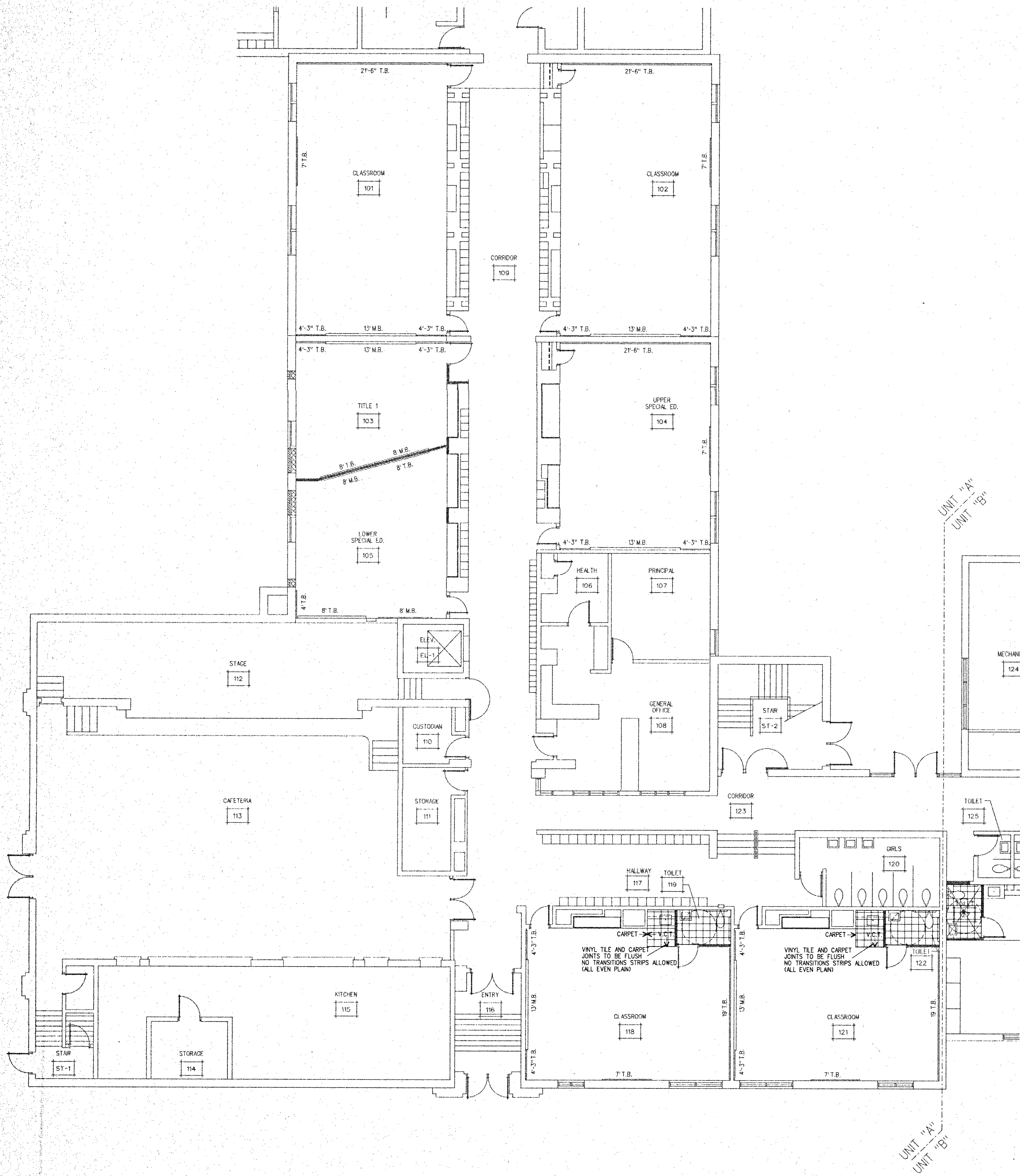
- 501 UNIT "A" DEMOLITION PLAN
- 502 UNIT "B" DEMOLITION PLAN
- 503 UNIT "A" ELECTRICAL & LIGHTING PLAN
- 504 UNIT "B" ELECTRICAL & LIGHTING PLAN
- 505 UNIT "C" ELECTRICAL PLAN
- 506 ELECTRICAL DETAILS AND LEGENDS



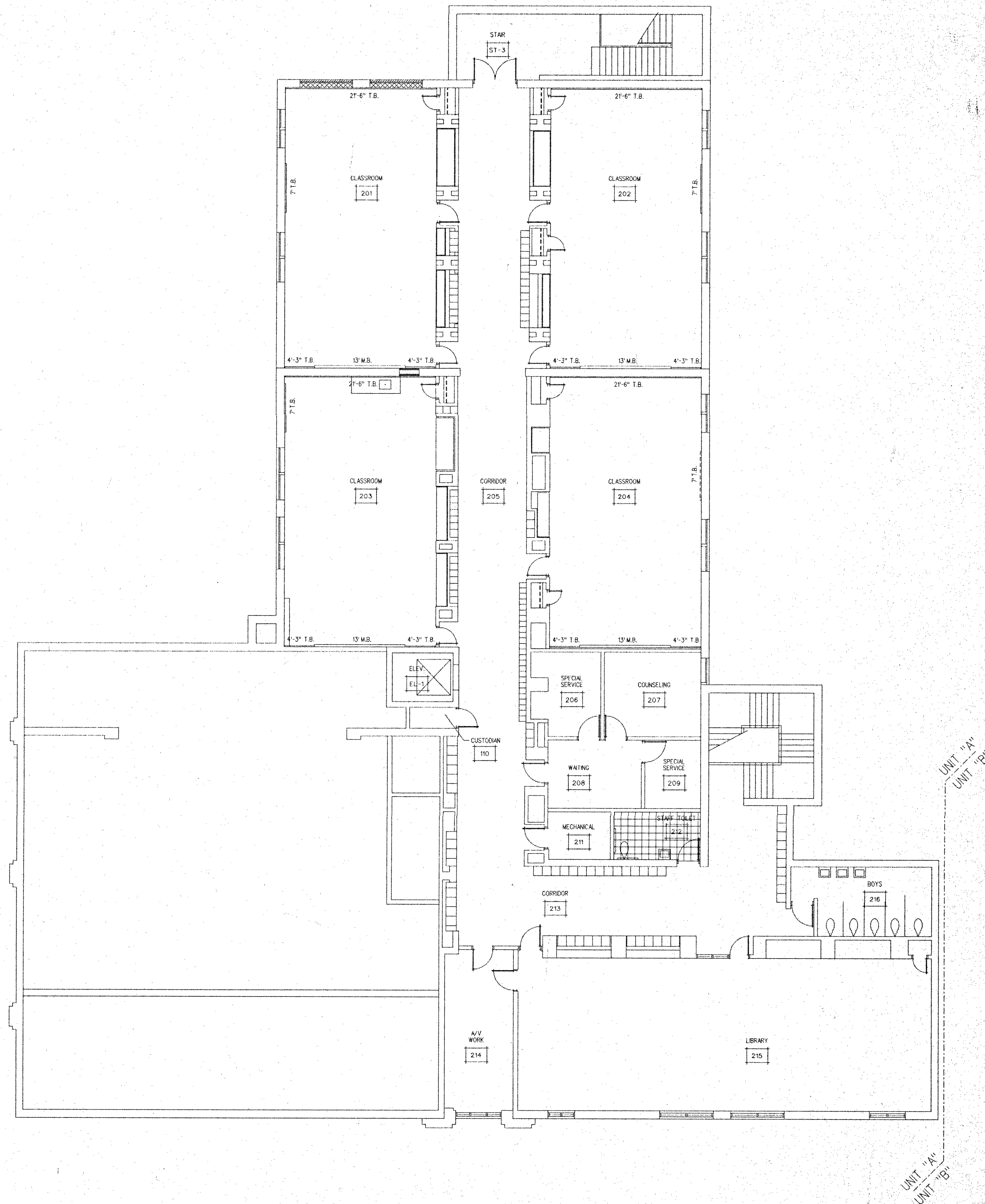
OVERALL ELEMENTARY SCHOOL FLOOR PLAN
SCALE: 1" = 50'-0"

PHASE 2
DECEMBER 17, 2001





Plan North
 NORTH
 UNIT "A" FIRST FLOOR PLAN
 1/8" = 1'-0"



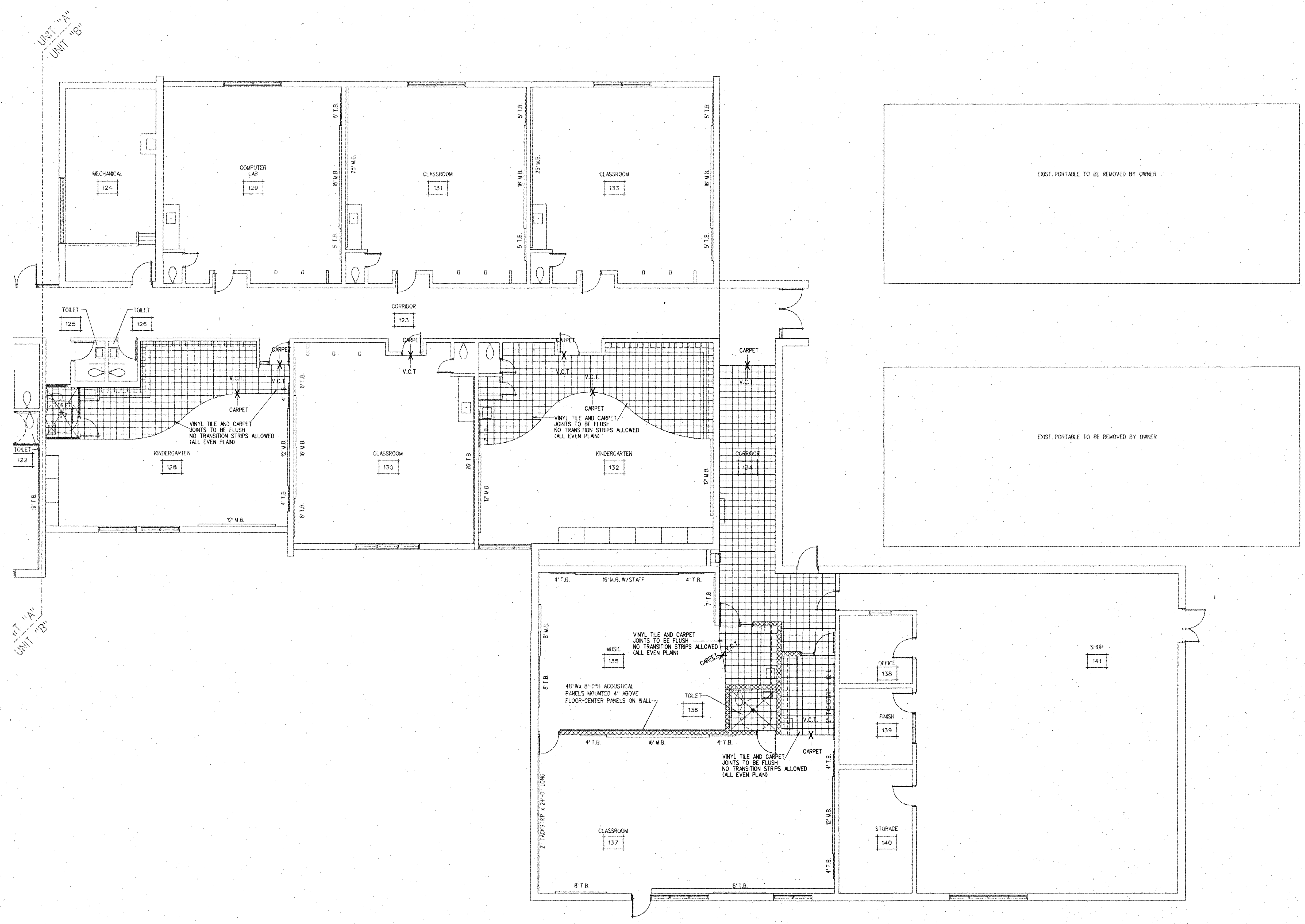
Plan North
 NORTH
 UNIT "A" SECOND FLOOR PLAN
 1/8" = 1'-0"

REMUS ELEMENTARY SCHOOL PHASE II REMODELING
 CHIPPEWA HILLS PUBLIC SCHOOLS

REMUS, MICHIGAN

DESIGNED BY	DATE
DRAWN BY	DATE
CHECKED BY	DATE
APPROVED BY	DATE





Plan North

 UNIT "B" FLOOR PLAN
 1/8" = 1'-0"

REMUS ELEMENTARY SCHOOL PHASE II REMODELING
 CHIPPEWA HILLS PUBLIC SCHOOLS
 REMUS, MICHIGAN

DESIGNED BY	DATE	REVISIONS	REVISION
DM		12/20/01 FOR OWNER APPROVAL	
		02/27/02 FOR BIDDER CONSULTATION	
		14 DEC 2001 12:54:45	

UNIT "B"
 FLOOR COVERING PLAN

